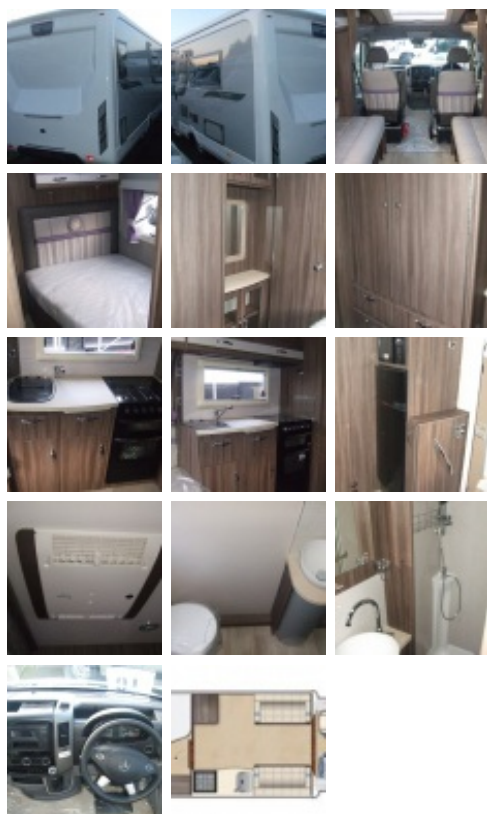


### Auto-Sleepers Burford



Sale Item was ~~£76,995~~, Now:- **£SOLD**

Year:	<b>2018 New &amp; Unregistered</b>
Number of Berths:	<b>4</b>
Engine Size:	<b>316CDI 163bhp</b>
Fuel Type:	<b>Diesel</b>
Width:	<b>2.78 Metres</b>
Height:	<b>2.88 Metres</b>
Length:	<b>7.88 Metres</b>
Gross Weight:	<b>3880 kgs</b>

### 2018 model

Mercedes Sprinter based coachbuilt

316CDI 163bhp, **automatic**

Rear bathroom layout

A spacious 4 berth rear bathroom, fixed-bed layout with front lounge comprising of two side-facing settees (converting to transverse double) and a fully featured kitchen. Based on the every-popular Mercedes Sprinter chassis, this fixed-bed ensuite combines a luxurious, spacious interior with unprecedented driving comfort.

#### Main features

- ➡ Sprinter 316CDI 163bhp
- ➡ 'Fix & Go' tyre emergency kit
- ➡ Electric/heated cab door mirrors
- ➡ Electric cab windows
- ➡ Driver & passenger airbag
- ➡ Audio 10 radio (Bluetooth & SD)
- ➡ Key fob remote central locking (cab & habitation)
- ➡ Driver & passenger seat armrest
- ➡ ESP with active skid control
- ➡ ABS with EBD
- ➡ Cab alarm
- ➡ Thatcham Cat 6 tracker
- ➡ TV aerial
- ➡ 'Valencia' furniture
- ➡ 'Catalan Berry' Upholstery

#### Specification also includes:

- ➡ **Roof air conditioning**

#### Mercedes Media Pack (comprising)

- ➡ Maxview VuQube II automatic satellite system
- ➡ Twin LNB to support 2 receivers
- ➡ Fully automatic tuning
- ➡ Receives Astra 1, 2 & 3 and Hotbird

- ➡ Compatible with any SD/HD free to air sat receivers

#### Other Features

- ➡ Full oven, grill & dual fuel hob
- ➡ Fridge with separate freezer
- ➡ Microwave
- ➡ Luxurious end washroom
- ➡ External skirt storage locker
- ➡ Opening wind-up skyview window
- ➡ Panoramic wind-up roof-light
- ➡ Manual wind-out canopy awning
- ➡ Hartal exterior door c/w sliding door flyscreen
- ➡ External BBQ & 230V mains sockets
- ➡ Crockery set & crystal glasses
- ➡ 25ltr underfloor mounted LPG gas tank
- ➡ Fresh water tank
- ➡ 91ltr waste water tank
- ➡ Fire extinguisher
- ➡ Safe

#### Premium pack (comprising)

- ➡ 7 speed fully automatic gearbox
- ➡ Alloy wheels
- ➡ Cab air conditioning
- ➡ Cruise control
- ➡ Manual roll-out canopy awning
- ➡ Colour reversing camera
- ➡ Garmin sat-nav
- ➡ 80W solar panel

#### Winter pack (comprising)

- ➡ Fresh & waste water tank heater blanket
- ➡ Concertina cab blinds (in lieu of cab curtains)
- ➡ Truma Combi heater upgrade
- ➡ Wheel arch insulation blankets