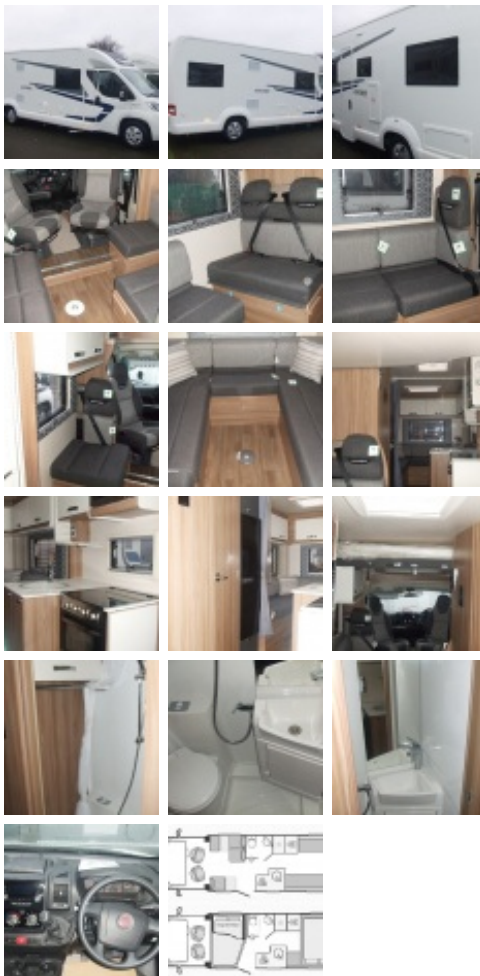


Swift Escape 674



Sale Item was ~~£48,380~~, Now:- **£45,995**

Year:	2017 New & Unregistered
Number of Berths:	6
Engine Size:	2.3 Litre 130bhp
Fuel Type:	Diesel
Width:	2.31 Metres
Height:	2.88 Metres
Length:	7.41 Metres
Gross Weight:	3500 kgs

2017 Ducato 2.3ltr 130bhp

Rear lounge 6 berth coachbuilt

With drop-down bed

Special offer : New & unregistered 2017 model

2017 marks the complete redesign of the Escape range. It's new streamlined low-profile exterior & fully revised interior provide an excellent entry-level motorhome. This 674 is a spacious 6 berth comprising a rear lounge (converting to a transverse double bed) forward dinette over which is specified a drop-down double bed and large rear bathroom.

Final specifications subject to change without prior notice

Main features

- ➡ Fiat chassis cab with daytime running lights
- ➡ Fiat Euro 6 130bhp, 2.3 litre engine
- ➡ 6 speed manual gearbox
- ➡ DAB Radio/MP3 player with Bluetooth
- ➡ Electric tinted cab windows
- ➡ Electric / heated exterior cab mirrors
- ➡ Remote central locking of cab doors
- ➡ Immobiliser with rolling code
- ➡ Thermal cab window covers
- ➡ ABS brakes with EBD

- ➡ Captains chairs
- ➡ Driver and passenger seats with:
 - ➡ Position, height and rake adjustment
 - ➡ Swivels
 - ➡ Two armrests
 - ➡ Fully upholstered covers
 - ➡ Base surrounds

- ➡ AL-KO extra long wheelbase
- ➡ 'Fix & Go' tyre repair system
- ➡ Exterior access locker door

- ➡ Streamlined low profile look
- ➡ European Whole Vehicle Type Approval
- ➡ 'SMART Plus' construction with full GRP bodyshell
- ➡ 'PURE' Polyurethane timberless framed body shell
- ➡ Dynamic graphics coordinated with white cab
- ➡ Exclusive LED rear light clusters & marker lights
- ➡ Low energy LED awning light
- ➡ Locker for 1 x 7kg and 1 x 13kg gas bottles
- ➡ Bike locking point on rear cross member
- ➡ Bike rack fixing rails fitted to the rear
- ➡ Heavy duty chassis extensions
- ➡ Seat belts on all designated passenger seats

- ➡ 'Aralie Sen' furniture
- ➡ 'Nova' soft furnishing scheme (2 scatter cushions)
- ➡ Matt white overhead lockers

- ➡ **Manual drop-down bed** (dealer specified)
- ➡ Swift AirWave foam bedding
- ➡ Pleated cassette blinds and flyscreens
- ➡ Removable entrance mat
- ➡ Removable carpets

- ➡ Carbon monoxide alarm
- ➡ Smoke alarm

- ➡ Dometic 138 litre slimline fridge
- ➡ Oven and grill with electronic ignition
- ➡ 3 burner gas hob with electronic ignition
- ➡ Microwave oven

- ➡ Thetford cassette toilet with electric flush

- ➡ Grade 3 heating & thermal insulation
- ➡ Dual fuel heating with Truma Combi 6
- ➡ Digital programmable controller for heating and hot water
- ➡ 100 litre internal fresh water tank with level sensor
- ➡ 68 litre waste water tank with level sensor
- ➡ Electronic fresh and waste water dump valves

- ➡ **'Swift Command' control system**

Special Value Comfort Pack consisting of:

- ➡ Cruise Control
- ➡ Panoramic opening sunroof
- ➡ Cab air-conditioning
- ➡ Passenger air bag
- ➡ Easy action concertina door flyscreen
- ➡ Pleated windscreen blind
- ➡ Status 570 TV aerial

Winter Pack with:

- ➡ Waste water tank heater
- ➡ Under floor waste pipe insulation
- ➡ Fridge vent covers

Thatcham Category 6 approved pro-active tracker

Subject to annual subscription